

GO THE EXTRA MILE

Established in 1995, **SSA Design Studio**, headed by the sound guidance of architects **Anita** and **Sandeep Shah**, has grown as a team of professionals, who integrate their abilities to offer complete understanding and practical solutions to their clients.

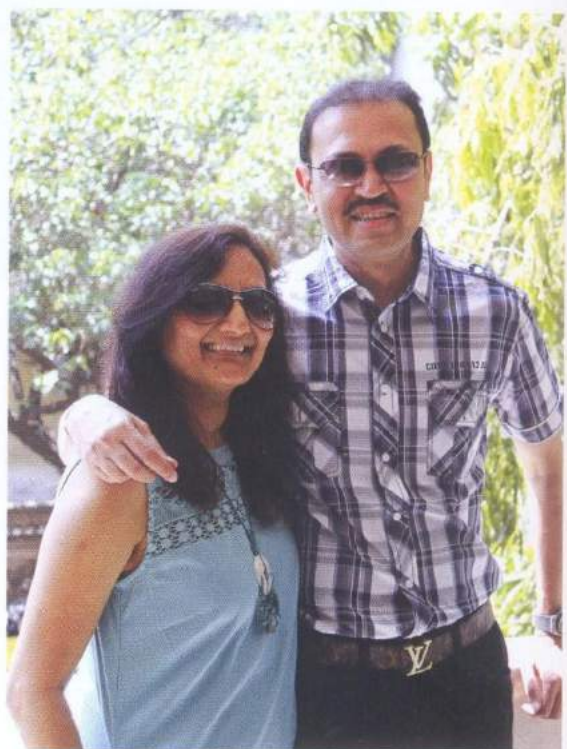
Photo credits: Rahul Pawar (Office)

Designers Anita and Sandeep with passion and enthusiasm have created a unique reputation of innovation and superior service by creating aesthetically pleasing and radical design solutions within the allocated budget and time frame. They always strive to be one step ahead and give the clients more than what they expect!

An eye catching office

Welcome to a 4,000 sq ft chic office space in Mumbai, designed for a company with business interest in diverse sectors. The entire plan of this office space is designed on principles of Vastu Shastra. The biggest challenge for these designers was to create an easy access to all departments, yet visually blending a unifying, private space.

The reception cum waiting area spell casts a dramatic feel with black Portoro Italian marble flooring and backlit figured onyx wall that forms a perfect backdrop to highlight the company logo. The reception table too

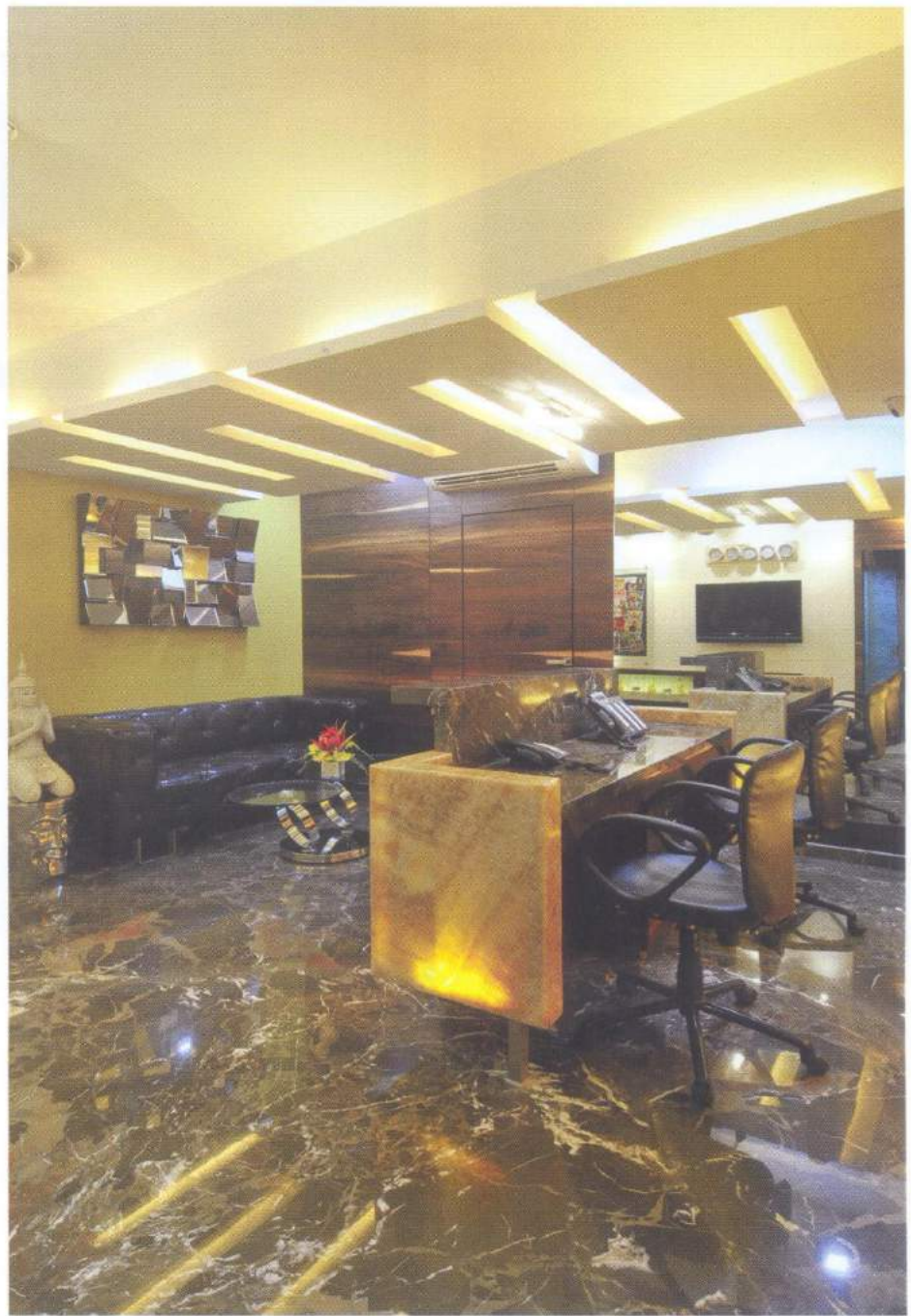




done in backlit onyx and a trendy ceiling with indirect lighting gives interesting forms to the space and accentuates the Onyx wall.

A mini conference room attached to reception looks spacious with glass partitions, maintaining visual connectivity with the rest of the area. The mid air suspended table, adds to the visitors' intrigue. An Italian marble table top in the larger conference room with mirror and veneer paneling on the walls; the ceiling adorned by a crystal chandelier, specially sourced from Dubai, give it a classy feel. The client with versatile business needs instructed Anita and Sandeep to design two informal meeting rooms' besides these two formal conference rooms. The designers then successfully created a relaxed cafe kind of ambience in the large informal meeting room with beige sofas, white brick finished rough walls and dark wooden flooring. The second –small informal meeting room is clad in wood with furniture in sync with the theme.

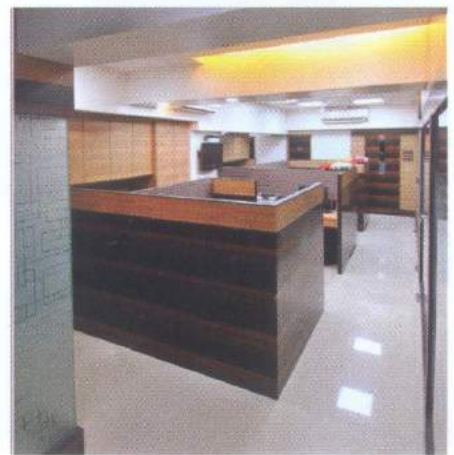
The three cabins designed for the directors of this company are treated with different materials to reflect individual personalities. The first cabin symbolizes bold identity and this is depicted wisely by the

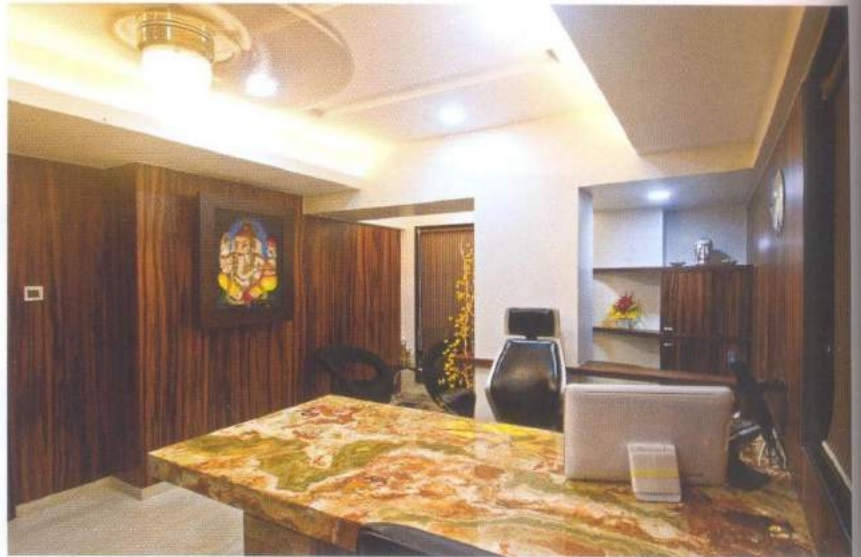


designers with an eye catching table top in backlit onyx that holds the centre stage of this classy cabin, clad in veneer. This large cabin also makes space for a relaxed sitting space for two.

With a different perspective, the second cabin is exciting with innovative materials, the table and partitions are done in leather and veneer cladding. A fiery backlit onyx, adds zest to the space.

The Zen concept in the third cabin with a large 3D painting of goddess Laxmi





under one roof (Interior Design, Architecture, Structural, MEP, Landscape and Green Building Design) for which they have strategic tie-ups. As a TDC provider, they design the project in totality and keep the various design parameters under check to achieve the desired objective, thus enabling their clients to realize their dreams.

White House

We take you into a cheerful home; sprawling across 2500 sq ft. This flat in Mumbai is designed to give a contemporary feel to the space. The all white theme adds to the spacious look, ensuring a smooth flow of vision

ensures peace and wellbeing to be showered at all times to the inmates. The partitions and table top all in travertine marble, adds a very sober ambience to the whole space.

Simple and functional detailing with landscape liven up the ambience of the staff area. Commenting on the overall experience while working on this project, Ar. Sandeep adds, "We understand the need of the ever demanding construction industry and do not shy away from trying new materials and innovative design concepts. We believe in exploring ideas shared during the design development stage by various team members, the clients, and the project team in addition to our own design expertise and deliver the maximum."

It is not just intelligent office spaces, SSA is known as a total design consultancy,





with highlights in silver. The client required a clean, spacious home with a large living room and a dedicated Puja room to cater to frequent religious social gatherings. "A large entrance wall gave us the opportunity to highlight it in panels with LED lights. The levels created by way of panelling give the wall a sculptured form even in absence of lighting. Special interest was created in the ceiling by way of using backlit suspended glass," adds Ar. Anita.

A sliding glass door separates the living room from the Puja room. The Puja room which opens up into the hall, when





the concept of maintaining visual continuity in each room, the kitchen too has sliding glass doors, which open up to make way for semi open kitchen, when required.

The Master suite comprises a lounge area, bed and a walk-in wardrobe with glass partitioned bathroom. The other bedrooms - children room and a guest room are designed with a minimalistic approach.

The entire house including the bathrooms sparkle in white and is accentuated with silver shade, wherever required. This colour palette provides plenty of scope to experiment with the look by way of changing accessories, as and when desired.

Know the designers

Sandeep and Anita graduated from L.S. Raheja School of Architecture, Mumbai, in 1992. Bestowed with the honour of being the Maharashtra State's topper in the final year of Architecture in 1992, Ar. Sandeep proceeded further, to complete his Masters Degree in Architecture from California Polytechnic State University (U.S.A). With a body of committed professionals, SSA takes pride in designing intelligent spaces, totally satisfying the end users. 📍



required makes way for a larger seating facility. The door of this divine room is in glass, engraved with Jain scriptures. The marble *Mandir* is custom made as per the client's

specific religious requirements. Panelled niches neatly camouflage the entry to the storage and utility area, tucked between the Puja room and dining room. Following

www.ssadesignstudio.com